

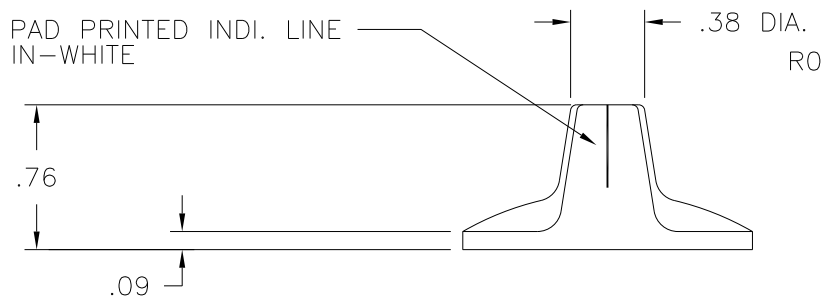
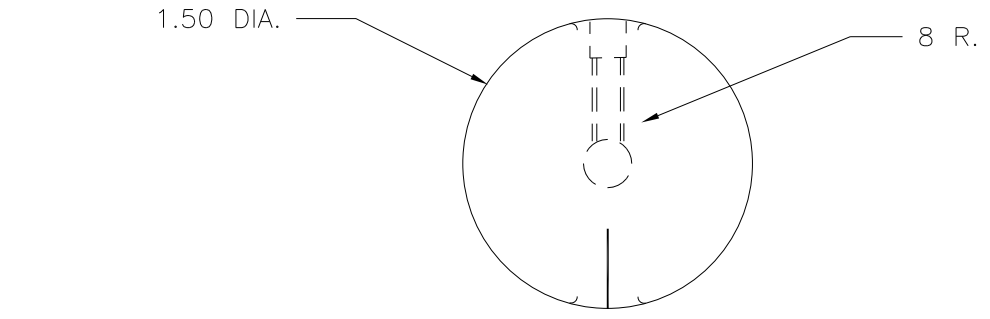
PART NAME: KNOB      SCALE: 1:1      DATE: 9/01/93      DR. BY HD

DAVIES MOLDING COMPANY  
CAROL STREAM, ILLINOIS 60188

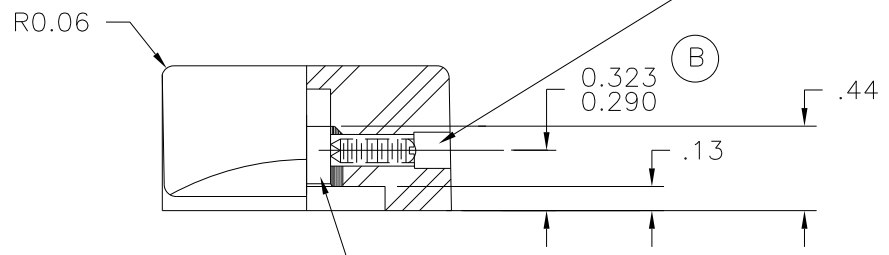
P/N 1520-X  
BASE PART 1520-02  
SET SCREW I0022

THIS DRAWING IS THE PROPERTY OF DAVIES MOLDING COMPANY, IS SUBMITTED SOLELY AS A DESIGN OR ENGINEERING PROJECT. WE ACCEPT NO RESPONSIBILITY WHATSOEVER FOR THE PRACTICAL APPLICATION OF THE PIECES MADE TO THIS DESIGN.

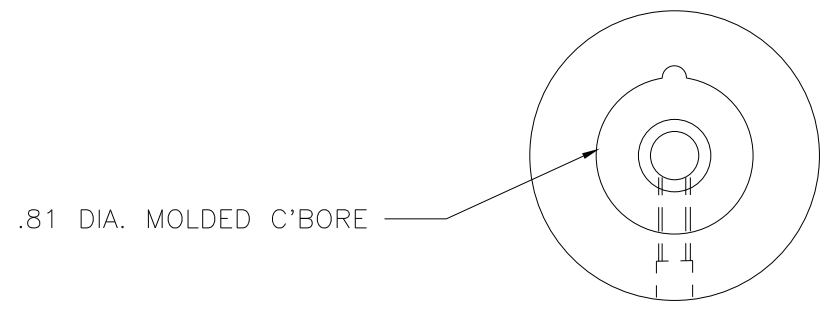
(A)



.177 DIA. X 3/16 C'BORE  
USE # 28 DR.(.140); # 8-32 TAP.  
# 8-32 THD. X 7/16 LG. CUP POINTED,  
SLOTTED TYPE, SET SCREW I-22  
ONE(1) REQ'D.



(B)



MATERIAL: G.P. PHENOLIC (B11)  
COLOR: BLACK

TOLERANCES: UNLESS OTHERWISE SPECIFIED	DO NOT SCALE DRAWING	B	WAS +/- 0.015	RF	6/17/14
DECIMALS: X.XXX ± .005 X.XX ± .015	MM: X.XX ± 0.15MM X.X ± 0.4MM	-	UPDATED/HAD TOOLBOX	EV.	8/5/02
FRACTIONS ± 1/64	ANG. ± 1°	A	WAS 1520-A PIN	HD	1/18/95
CHANGES					